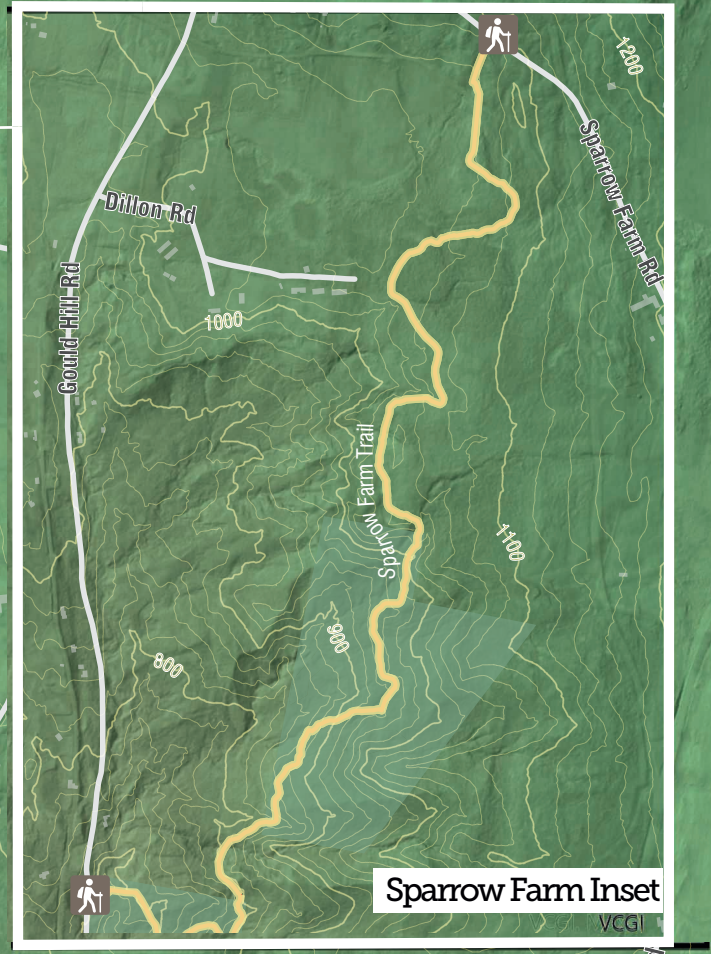


ALL AROUND ADVENTURE
 downtown
Montpelier
 vermont
TRAIL MAP



<http://montpelier-vt.org/trailmap>

Support Montpelier Parks!

All of our parks were created through generous donations of land or funds. This spirit of generosity has led to the amazing network of parks and trails that we enjoy today. Our Parks Legacy Fund supports the strategic expansion of our Parks system. You can support this goal through a donation of funds, stock, or a legacy gift.

To learn more, visit:
www.montpelier-vt.org/ParksLegacy

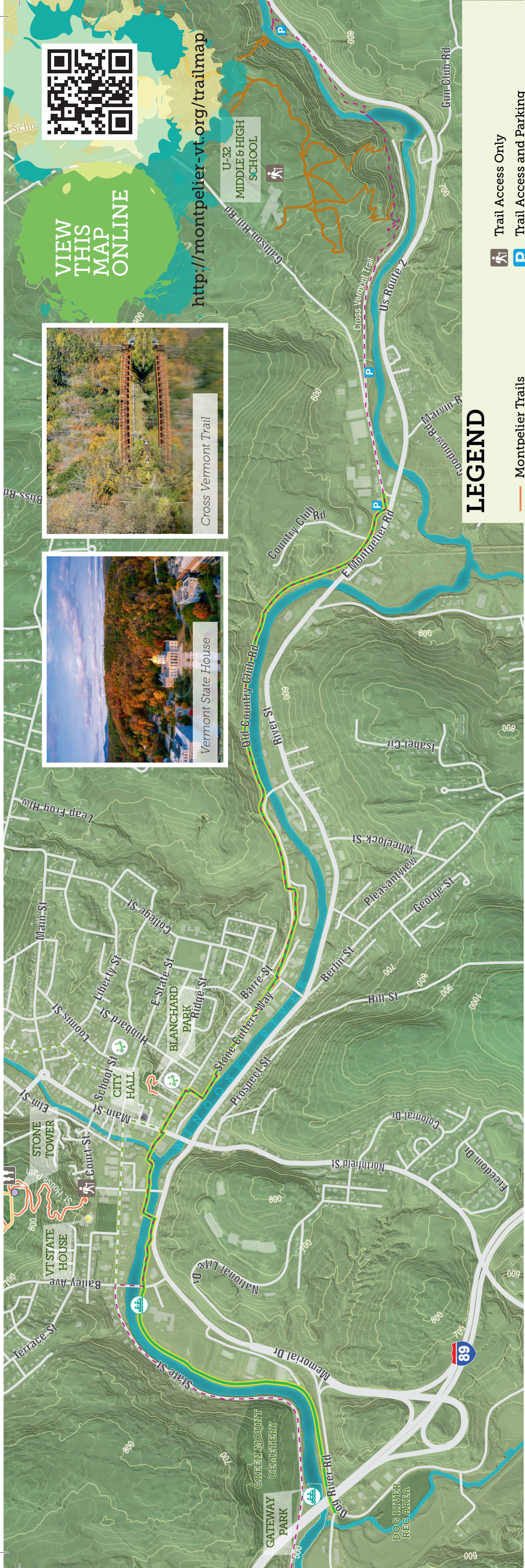


LEGEND

- Montpelier Trails
- - - Montpelier Connector Trails
- Montpelier Trails (Bikes Allowed)
- >> Trail Direction (follow arrows)
- Siboinebi Recreation Path
- - - Cross Vermont Trail Route
- - - Downtown Bike Friendly Route
- 🚶 Trail Access Only
- P Trail Access and Parking
- 🎒 Playgrounds
- 🚣 Paddle Boat Access
- 🏊 Swimming Area
- 🛼 Skate Park
- 🚻 Toilets
- 🌳 Public Lands
- 🛣️ Roads

1/4 Mile





This project made possible with generous support from:



PARK HISTORY

The public lands we enjoy in Montpelier were shaped by the last ice age that ended 10,000 years ago. The indigenous people of the area, most recently the Western Abenaki, have occupied this area continuously since then, and still live in this region today. The City of Montpelier was founded in 1781, and our first park was established in 1899 with the donation of 106.8 acres for Hubbard Park. Hubbard Park has since been expanded six times and is now 254 acres.

In 1995, 152 acres was purchased by the City to create the North Branch River Park, with support from the Montpelier Conservation Commission, the Trust for Public Land, the Vermont Housing and Conservation Board, and many individual and business donors. It was added to in 1997 and 2003 and now stands at 193 acres.

Montpelier also has 10 other small parks throughout the City. Visit www.montpelier-vt.org/Parks for more information. All of our parks are overseen by the 5-member Parks Commission, whose members are elected to 5-year terms by the public.

Our Parks are part of a larger vision for Montpelier where visitors and residents can move throughout the City on trails and greenways. This "hub and spokes" vision of parks and greenways imagines a Montpelier where all residents are within a 10-minute walk of a park, and a 15-minute walk of a large natural area.

Learn more at www.montpelier-vt.org/464/Parks-Commission.

DOGS

Please follow the Canine Code of Conduct for each individual Park. Dogs must be kept on leash in all our Parks except for Hubbard Park. ALWAYS clean up your dog's poop, whether on trail or off. **There is no poop fairy.**

DOWNTOWN MONTPELIER

Are you looking for the latest event calendar? Want to find an outdoor recreation itinerary? Head to www.montpelierlive.org for all the latest events and adventures in Montpelier.

World class outdoor recreation is within minutes of downtown. Montpelier is surrounded by ski resorts, mountain biking destinations, bucket-list hikes, hidden swimming holes, and all that VT has to offer. Start and end your adventure in Montpelier to enjoy everything downtown has to offer. Visit independently owned shops offering books, records, clothing, fine crafts and pastries, or dine in one of the many farm-to-table restaurants, craft beer bars, and cafes. Visit the impeccably restored State House, and then hop on the trail behind the capitol to explore Hubbard Park & beyond!

PARK ETHICS

Carry in, Carry out! Take only photos, leave only footprints. Please follow the existing trails and do not make your own new ones. Give Back! Every year volunteers log over 10,000 hours maintaining trails, pulling invasive species, planting trees, and more.

Please reach out to Parks Director Alec Ellsworth at aellsworth@Montpelier-vt.org if you're interested in volunteering.

LEGEND

- Montpelier Trails
- Montpelier Trails (Bikes Allowed)
- Sibonebi Recreation Path
- U-32 Trails
- Cross Vermont Trail Route
- Downtown Bike Friendly Route
- Roads
- Trail Access Only
- Trail Access and Parking
- Playgrounds
- Paddle Boat Access
- Toilets

N



MONTPELIER YOUTH CONSERVATION CORPS

The Montpelier Youth Conservation Corps Corps (MYCC) is a program that offers high schoolers in Central Vermont a valuable work experience during the summer and school year. Working alongside Parks staff, MYCC members build and maintain trails, manage invasive species, and grow food for the Meals on Wheels program.

Please consider supporting these hard-working young people who do so much for our community. \$5,000 supports a 9 week summer position for one student. You can make a tax-deductible donation to the program at www.montpelier-vt.org/MYCC

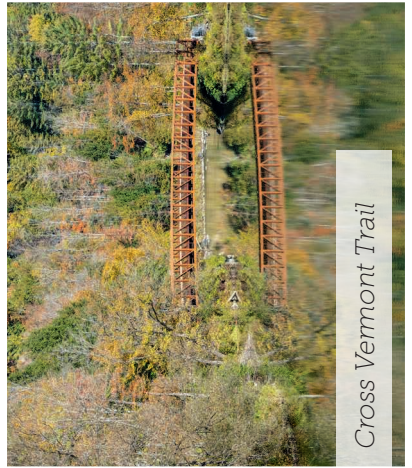
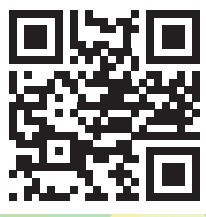
ACCESSIBILITY

Montpelier offers the following universally accessible trail options:

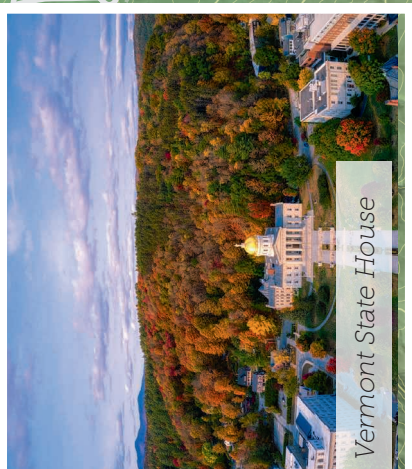
- Our 4 mile recreation path running across town along the Winooski River. Accessible parking areas are available at City Hall, The Department of Labor Park 'n Ride, and Old Country Club Rd.
- Hubbard Park's interpretive trail from the New Shelter to the Tower. Accessible parking is available at the New Shelter near the end of the road in Hubbard Park.
- The Cross Vermont Trail. Accessible parking off of Gallison Hill Rd. Maps and more information at crossvermont.org.

VIEW THIS MAP ONLINE

<http://montpelier-vt.org/trailmap>



Cross Vermont Trail



Vermont State House

